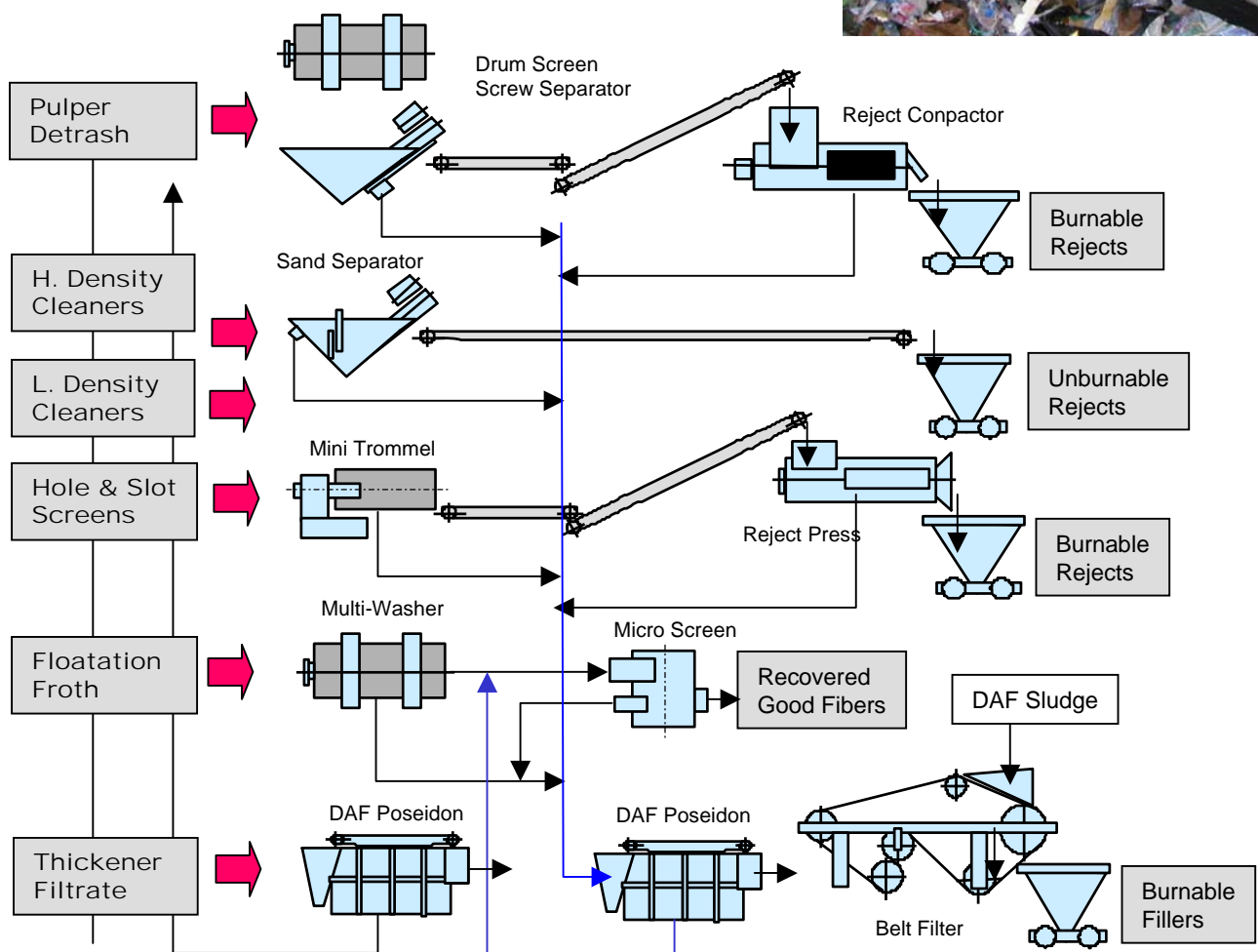


# Rejects Handling

## Various Rejects Handling Equipment

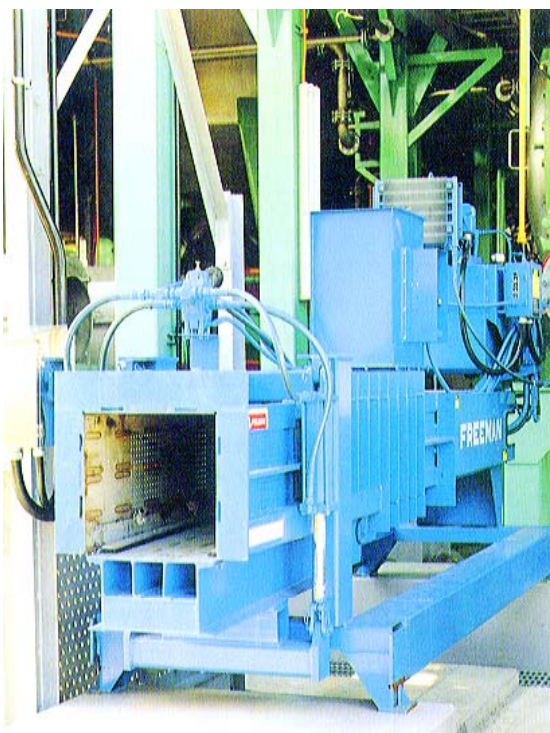
### FEATURES AND BENEFITS

Aikawa provides not only the machines for main stream of Recycling Fiber Treatment, but also rejects handling equipment and the processing system as shown below.



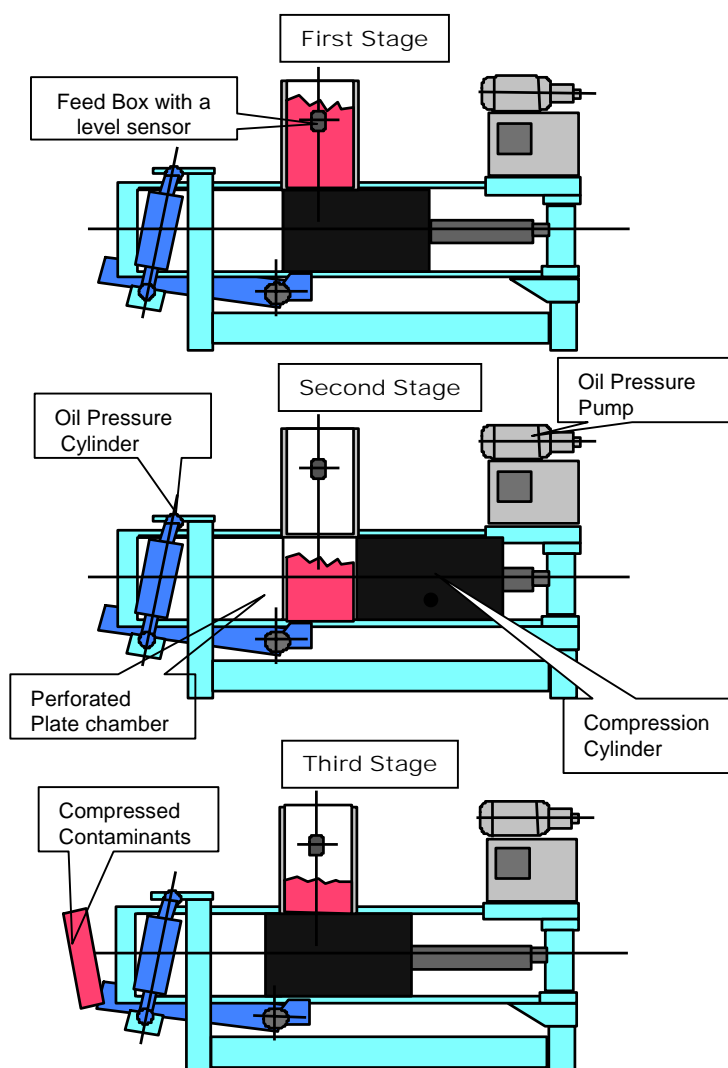
# "ARP" Compactor

## Principal Description



The "ARP" Compactor is mainly used for the compression of the big size contaminants such as reject from pulper detrash system of a low consistency pulper or the reject from the screw separator for reject handling of a high consistency pulper.

Contaminant is fed into the inlet stock box. When the level sensor detects pre-fixed level, the compression cylinder moves to back side, and then the contaminant drops into the perforated plate chamber. After that, the cylinder moves to forward to compress the contaminant. The expected consistency of the compressed contaminant is about 40 to 50%.



Standard Specification & Capacity of ARP

	Model ARP-04
Installed Motor	15KW – 4P
Inlet Chamber Size	380 mm – 380 mm
Required Space for Installation	1.3m – 4.0m
Outlet Consistency	40 – 50 %
Throughput ( at 5% feed consistency)	14T/D
( at 10% feed consistency)	28T/D



AIKAWA Shizuoka/Japan  
Phone +81 54 261 1102  
Fax +81 54 261 4135

AIKAWA Jakarta/Indonesia  
Phone +62 21 572 3220  
Fax +62 21 572 4257

AFT Varkaus/Finland  
Phone +358 207 429 200  
Fax +358 207 429 280

AFT Incheon/Korea  
Phone +82 32 814 2825  
Fax +82 32 815 2825

FINEBAR/USA  
Phone +1 860 645 5340  
Fax +1 860 645 5343

AIKAWA Tokyo/Japan  
Phone +81 3 3271 7465  
Fax +81 3 3281 2875

AFT Helsinki/Finland  
Phone +358 207 429 200  
Fax +358 9 3509 0442

AFT Strasbourg/France  
Phone +33 3 8855 3525  
Fax +33 3 8855 3520

AFT Singapore/Asia  
Phone +65 6246 1354  
Fax +65 6246 1694



AIKAWA Shanghai/China  
Phone +86 21 6235 0597  
Fax +86 21 6235 0670

AFT Lennoxville/Canada  
Phone +1 819 562 4754  
Fax +1 819 562 6064

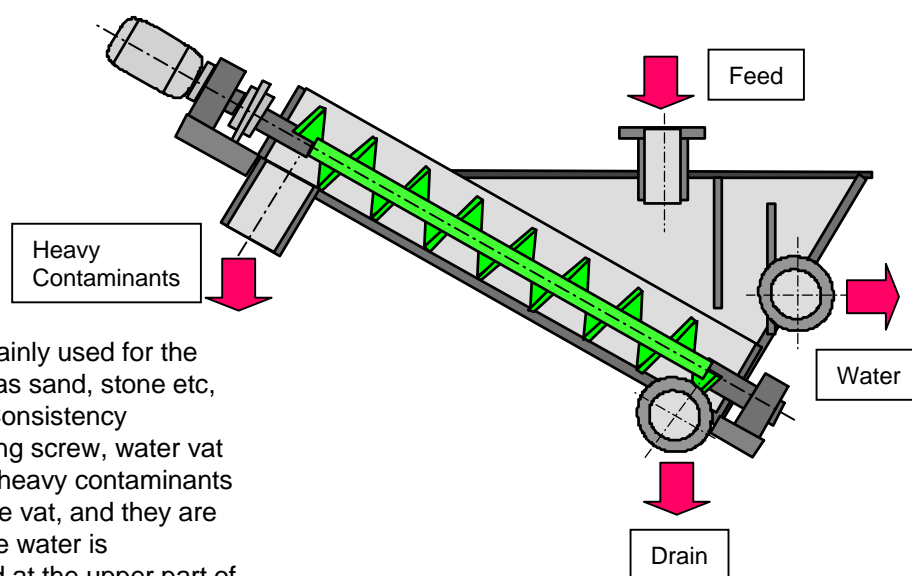
AFT Montreal/Canada  
Phone +1 514 481 6111  
Fax +1 514 481 3335

POM Helsinki/Finland  
Phone +358 975 175 200  
Fax +358 975 175 250



# "KSD" Sand Separator

## Principal Description



The "KSD" Sand Separator is mainly used for the separation of heavy rejects such as sand, stone etc, from the reject of High and Low Consistency Cleaners. It consists of a conveying screw, water vat and a screw rotating device. The heavy contaminants rapidly deposit at the bottom of the vat, and they are conveyed upward by a screw. The water is discharged from the outlet located at the upper part of the vat. The construction is very simple as shown on the picture mentioned above. The maintenance is also very easy.

Standard Specification & Capacity of KSD

	Model KSD-1	Model KSD-2
Installed Motor	0.2KW-4P (GM)	0.4KW-4P (GM)
Tub Volume	1.2 m <sup>3</sup>	2.4 m <sup>3</sup>
Capacity	15 – 40 m <sup>3</sup> /h	40 – 80 m <sup>3</sup> /h



AIKAWA Shizuoka/Japan  
Phone +81 54 261 1102  
Fax +81 54 261 4135

AIKAWA Jakarta/Indonesia  
Phone +62 21 572 3220  
Fax +62 21 572 4257

AFT Varkaus/Finland  
Phone +358 207 429 200  
Fax +358 207 429 280

AFT Incheon/Korea  
Phone +82 32 814 2825  
Fax +82 32 815 2825

FINEBAR/USA  
Phone +1 860 645 5340  
Fax +1 860 645 5343

AIKAWA Tokyo/Japan  
Phone +81 3 3271 7465  
Fax +81 3 3281 2875

AFT Helsinki/Finland  
Phone +358 207 429 200  
Fax +358 9 3509 0442

AFT Strasbourg/France  
Phone +33 3 8855 3525  
Fax +33 3 8855 3520

AFT Singapore/Asia  
Phone +65 6246 1354  
Fax +65 6246 1694



AIKAWA Shanghai/China  
Phone +86 21 6235 0597  
Fax +86 21 6235 0670

AFT Lennoxville/Canada  
Phone +1 819 562 4754  
Fax +1 819 562 6064

AFT Montreal/Canada  
Phone +1 514 481 6111  
Fax +1 514 481 3335

POM Helsinki/Finland  
Phone +358 975 175 200  
Fax +358 975 175 250





# Mini-Trommel

Separation of solid materials and water

## Principal Description

The "Mini-Trommel" consists of rotating drum with wire mesh, its rotating mechanism, and water receiving vat. This machine is usually used to separate the contaminants from the reject of screens and low consistency cleaners. The water contained in the screen (cleaner) reject is drained through wire cloth (about 30 mesh) of the rotating drum. It is quite simple construction.



Standard Specification & Capacity of Mini-Trommel

	Model M-1	Model M-2	Model M-3	Model M-4
Installed Motor	0.4KW-4P (GM)	0.4KW-4P (GM)	2.2KW-4P (GM)	5.5KW-4P (GM)
Drum Diameter	500 mm	500 mm	90 mm	900 mm
Drum Length	1200 mm	1500 mm	1660 mm	2250 mm
Through-put	30 m <sup>3</sup> /h	40 m <sup>3</sup> /h	70 m <sup>3</sup> /h	130 m <sup>3</sup> /h

Wire Mesh of the Drum: 30 Mesh



AIKAWA Shizuoka/Japan  
Phone +81 54 261 1102  
Fax +81 54 261 4135

AIKAWA Jakarta/Indonesia  
Phone +62 21 572 3220  
Fax +62 21 572 4257

AFT Varkaus/Finland  
Phone +358 207 429 200  
Fax +358 207 429 280

AFT Incheon/Korea  
Phone +82 32 814 2825  
Fax +82 32 815 2825

FINEBAR/USA  
Phone +1 860 645 5340  
Fax +1 860 645 5343

AIKAWA Tokyo/Japan  
Phone +81 3 3271 7465  
Fax +81 3 3281 2875

AFT Helsinki/Finland  
Phone +358 207 429 200  
Fax +358 9 3509 0442

AFT Strasbourg/France  
Phone +33 3 8855 3525  
Fax +33 3 8855 3520

AFT Singapore/Asia  
Phone +65 6246 1354  
Fax +65 6246 1694



AIKAWA Shanghai/China  
Phone +86 21 6235 0597  
Fax +86 21 6235 0670

AFT Lennoxville/Canada  
Phone +1 819 562 4754  
Fax +1 819 562 6064

AFT Montreal/Canada  
Phone +1 514 481 6111  
Fax +1 514 481 3335

POM Helsinki/Finland  
Phone +358 975 175 200  
Fax +358 975 175 250

